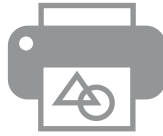


# 5.5-Inch Pizza Box Instructions


## STEP 1



Print pages 2 and 3 of this PDF on 8.5" x 11" card stock. Select **ACTUAL SIZE** when printing.

## STEP 2



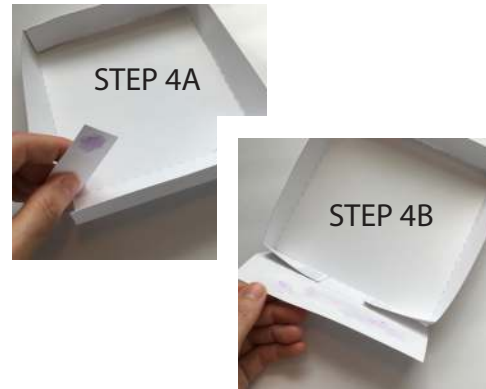
 CUT along all **SOLID LINES**.

## STEP 3



FOLD along all **DOTTED LINES** using a ruler as a guide. Then FOLD the Pizza Box LID back the other way so the art is on top.

## STEP 4



Use a glue stick and **GLUE FLAPS** in first then long side flap over.

## STEP 5



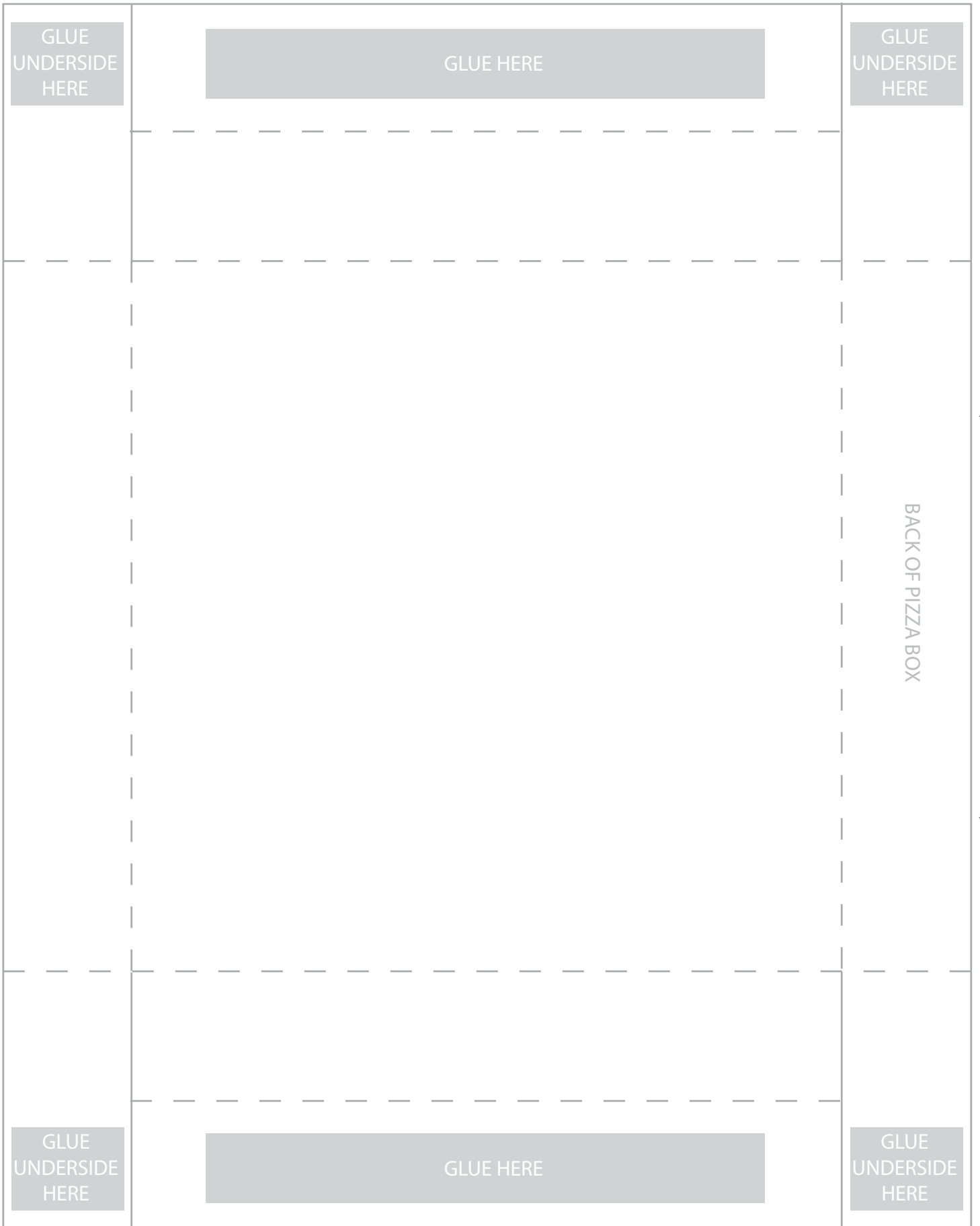
Glue the box lid onto the back of the bottom box.

## STEP 6



Tuck the side flaps in then the rounded front flaps and you're done.

FOLD = Dotted Lines      CUT = Solid Lines



FOLD = Dotted Lines

CUT = Solid Lines



GLUE this flap to the BACK OF PIZZA BOX

